

HILITE[®] UNDERWATER POOL LIGHT

INSTALLATION GUIDE

IMPORTANT SAFETY INSTRUCTIONS *READ AND FOLLOW ALL INSTRUCTIONS* SAVE THESE INSTRUCTIONS

Contents

		Page	Minimum Qualifications
Section I.	Installing a light fixture during new pool construction.	3	Licensed or Certified Electrician
Section II.	Replacing light fixture in existing pools.	5	Electrician or Qualified Pool Serviceman
Section III.	Replacing a lamp only.	7	Qualified Pool Serviceman or Homeowner

NOTE

Use this light fixture with Pentair Aquatic Systems light fixture housing 792066 or 7824XX, (SN 750 or SNL 750).

DANGER



RISK OF ELECTRICAL SHOCK OR ELECTROCUTION

This Underwater Light must be installed by a licensed or certified electrician in accordance with all current National Electrical Code and all applicable local codes and ordinances. Improper installation will create an electrical hazard which could result in death or serious injury to pool users, installers or others due to electrical shock, and may also cause damage to property. Read and follow the specific instructions in this Installation Guide.

DANGER

Before installing this product, read and follow all warning notices and instructions accompanying this light. Failure to follow safety warnings and instructions can result in severe injury, death, or property damage. Call (800) 831-7133 for additional free copies of these instructions.

IMPORTANT NOTICE



Attention Installer.

This manual contains important information about the installation, operation and safe use of this product. This information should be given to the owner/operator of this equipment.

⚠ DANGER! Risk of Electrical Shock or Electrocution!



This product must be installed by a licensed or certified electrician or a qualified pool serviceman in accordance with the National Electrical Code and all applicable local codes and ordinances. Improper installation will create an electrical hazard which could result in death --- or serious injury to pool users, installers or others due to electrical shock, and may also cause damage to property. Always disconnect the power to the pool light at the circuit breaker before servicing the light. Failure to do so could result in death or serious injury to serviceman, pool users or others due to electrical shock. READ AND FOLLOW ALL INSTRUCTIONS IN THIS MANUAL.

⚠ WARNING — Important Safety Information for Pentair Aquatic Systems Niche and Light Installation

- All Niche and Light installations must conform with all codes.
- Under no circumstances replace lights by splicing wire under water or behind niche.

HILITE® UNDERWATER POOL AND SPA LIGHT

Part Numbers

78780000, 78780100, 78780200, 78781000, and 78782000

Pentair Aquatic Systems HiLite® is Underwriters Laboratories Inc. listed for installation so that the top edge of the lens is at least 4 inches below the surface of the water in the pool, see Figure 1, below and on page 3. All references to the top edge of the lens of the HiLite® being at least 18 inches below the surface of the water in the pool are to now be **at least 4 inches** below the surface of the water in the pool.

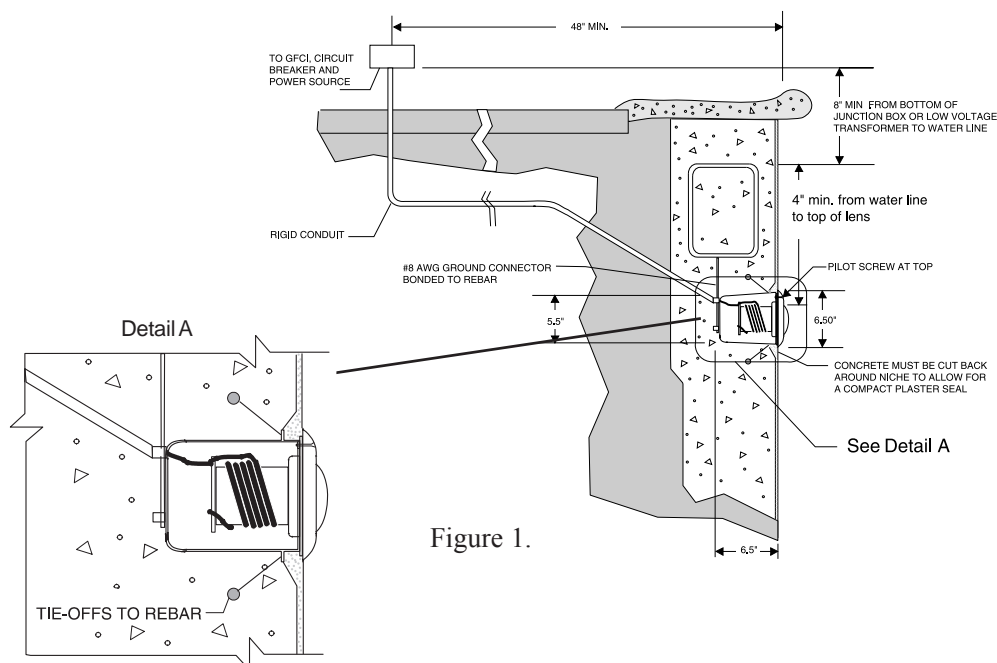


Figure 1.



Listed IK35

Section I. Installing a light fixture during new pool construction.

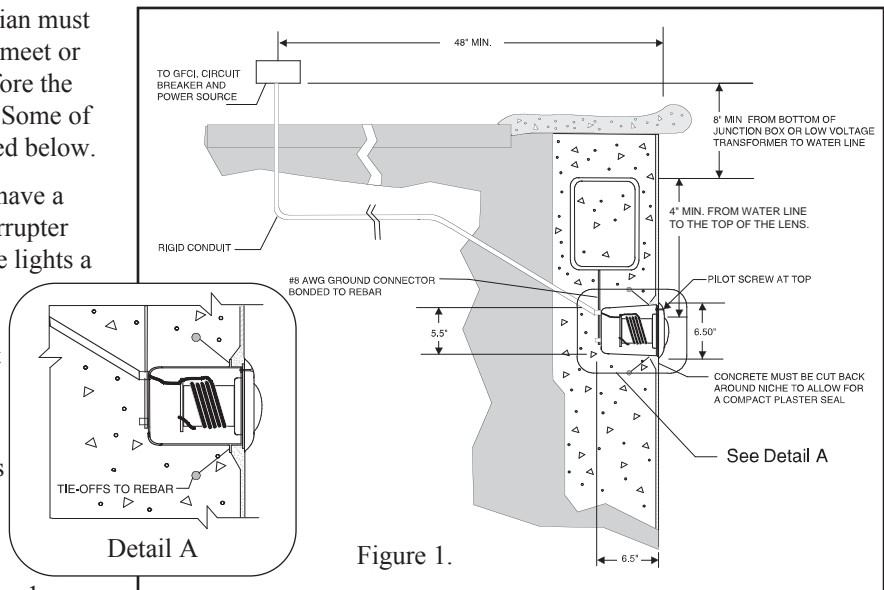
A. Preparatory steps which must be completed by the electrician before light is installed, see Figure 1.

1. Ensure that the electrical system of your pool conforms with all requirements of the National Electrical Code (NEC), and all local codes and ordinances.

A licensed or certified electrician must install the electrical system to meet or exceed those requirements before the Underwater Light is installed. Some of the NEC requirements are listed below.

a. The lighting circuit must have a Ground Fault Circuit Interrupter (GFCI), or for low voltage lights a listed swimming pool transformer, and have an appropriately rated circuit breaker.

b. The junction box or the low voltage transformer is located at least 8 inches above water level and at least 48 inches from the edge of the pool, see Figure 1.



c. The wet niche and all metal items within five (5) feet of the pool must be properly electrically bonded.

d. The wet niche must be properly installed so the pilot screw hole is at the 12 o'clock position and that the top edge of the Underwater Light's lens is at least 4 inches below the surface of the water in the pool, see Figure 1.

NOTE

The required orientation of all Pentair lights is with the pilot screw at the 12 o'clock position. This is guaranteed by proper niche installation.

e. The wet niche must be properly electrically bonded and grounded via the NO. 8 AWG ground connector located at the rear of the niche, see Figure 1.

2. To be certain that the pool's electrical system meets all applicable requirements, you should also consult the local building department.
3. Use only Pentair Aquatic Systems wet niches with this light fixture to ensure proper bonding and grounding connections.

B. Perform the following steps after the electrical system requirements are met.

1. Feed cord through conduit to junction box leaving at least four (4) feet of cord at the light fixture to coil around the light, see Figure 1. This four (4) feet of cord coiled around the light allows the light to be serviced after the pool is filled with water.
2. Cut the cord at the junction box or the transformer/junction box, leaving at least 6 inches of cord to make connections.
3. Strip six (6) inches of the outer cord jacket to expose the two insulated wires — Be careful not to damage the insulation on the two (2) inner wires.


4. If connecting the Underwater Light to a junction box, connect the black wire of the light to power and the white wire to common. There is no ground wire coming from the light. See Table 1 to determine which voltage taps to use at the low voltage transformer connection.
 - a. If connecting the Underwater Light to a Transformer/Junction Box unit, consult the instructions included with the Transformer/Junction Box unit to determine the correct wire connections.

Table 1. Determining Transformer Tap Voltage

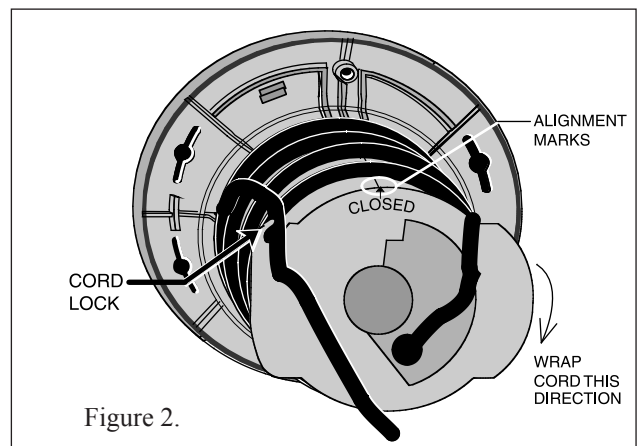
Cord Gage	*Total Cord Length (ft.)	12 Volt Tap	13 Volt Tap	14 Volt Tap
18	15 - 20		X	
18	25 - 30			X
16	15	X		
16	20 - 30		X	
16	35 - 50			X
12	15 - 30	X		
12	35 - 65		X	
12	70 - 75			X

* Note: Total cord length is length of cord from the light to the junction box plus the length of cord from the junction box to the transformer.


- b. The cord gauge is indicated on the cord jackets.


	<h2 style="margin: 0;">⚠ WARNING</h2> <p style="margin: 0;">Never operate this Underwater Light for more than 10 seconds unless it is totally submerged in water. Without total submersion, the light assembly will get extremely hot, which may result in serious burns or in damage of the lamp or lens. This may result in serious injury to pool users, installers, or bystanders, or in damage to property.</p>
--	--

5. Install the Underwater Light by rotating the light in a clockwise direction towards the niche, when viewed from front. Wrap the cord in a single layer around the light. Start wrapping the cord at the rear of the housing and work towards the face ring, see Figure 2.
6. When the Underwater Light is level with the niche secure the cord in the cord lock on the base of the light, see Figure 2.
7. Install the Underwater Light into the niche and tighten the special stainless steel pilot screw.
8. Fill pool until the Underwater Light is completely submerged in water before operating the light for more than 10 seconds. Turn on main switch or circuit breaker, as well as the switch which operates the Underwater Light itself, to check for proper operation.



Section II. Replacing light fixture in existing pools.

	⚠ DANGER
	<p style="text-align: center;">RISK OF ELECTRICAL SHOCK OR ELECTROCUTION</p> <p>This Underwater light fixture must be installed by a licensed or certified electrician or a qualified pool serviceman in accordance with the National Electrical Code and all applicable local codes and ordinances. Improper installation will create an electrical hazard which could result in death or serious injury to pool users, installers or others due to electrical shock and may also cause damage to property. Always disconnect power to the pool light at the circuit breaker before servicing the light. Failure to do so could result in death or serious injury to serviceman, pool users or others due to electrical shock.</p>

	⚠ DANGER
	<p style="text-align: center;">RISK OF ELECTRICAL SHOCK OR ELECTROCUTION</p> <p>This underwater low voltage light is designed for use with a low voltage transformer operating between 12 and 15 volts. Do not connect light directly to a 120 volt circuit as this could result in death or serious injury to pool users, installers, or bystanders, or in property damage.</p>

A. Perform steps 1 through 3, (following), before replacing a light fixture.

1. Ensure that the electrical system of your pool conforms with all requirements of the National Electrical Code (NEC), and all local codes and ordinances. A licensed or certified electrician must install the electrical system to meet or exceed those requirements before the Underwater Light is installed. Some of the NEC requirements are listed in items 1.a. through 1.d. below.
 - a. The lighting circuit must have a Ground Fault Circuit Interrupter (GFCI), or for low voltage lights a listed swimming pool transformer, and an appropriately rated circuit breaker.
 - b. The junction box or the low voltage transformer is located at least 8 inches above water level and at least 48 inches from the edge of the pool, see Figure 3.
 - c. The wet niche and all metal items within five (5) feet of the pool must be properly electrically bonded.
 - d. The wet niche is properly installed so the pilot screw hole is at the 12 o'clock position and that the top edge of the Underwater Light's lens is at least 4 inches below the surface of the water in the pool, see Figure 3.

NOTE

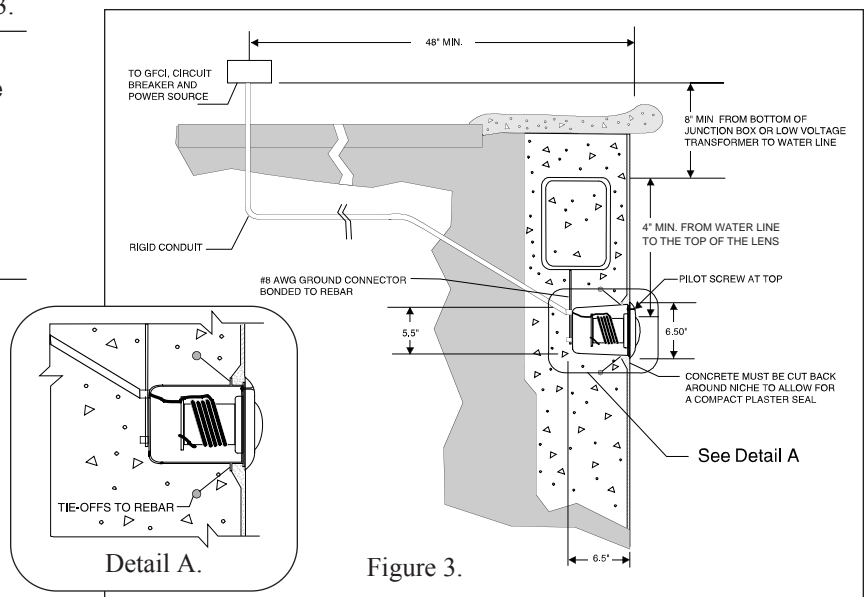
The required orientation of all Pentair lights is with the pilot screw at the 12 o'clock position. This is guaranteed by proper niche installation.

- e. The wet niche must be properly electrically bonded and grounded via the No.8 AWG ground connector located at the rear of the niche, see Figure 3.



NOTE

The pool or spa electrical system can be verified with a Pool and Spa Electrical Qualification Test kit. The test kit is available from Pentair Aquatic Systems. The electrical system inspection using the above kit must be performed by trained and certified personnel.

2. To be certain that the pool's electrical system meets all applicable requirements, you should consult the local building department.
3. Install this light fixture only in an Pentair Aquatic Systems wet niche. Wet niches made by other manufacturers may not provide proper bonding and grounding connections.



B. Replacing light fixture after electrical system requirements are met.

	 WARNING
	<p>Failure to bring the pool's electrical system up to code requirements before installing this Underwater Light will create an electrical hazard which could result in death or serious injury to pool users, installers, or others due to electrical shock, and may also cause damage to property.</p>

1. Turn off main electrical switch or circuit breaker, as well as the switch which operates the Underwater Light itself.
2. To remove light assembly, remove pilot screw at top of face ring, remove light assembly from niche, and place assembly on deck.
3. Remove junction box cover, disconnect the light fixture wires, and pull the cord through the conduit.
4. Feed the new light fixture cord through the conduit from the niche to the junction box.

NOTE

Special tools may be required to pull the cord through the conduit, depending on the length of the conduit.



5. Leave at least four (4) feet of cord to coil around the light fixture, see Figure 3. This four (4) feet of cord coiled around the light allows the light to be serviced after the pool is filled with water.
6. Cut the cord at the junction box, leaving at least six (6) inches of cord to make connections.
7. Strip six (6) inches of the outer cord jacket from the cord to expose the two insulated wires. Be careful not to damage the insulation on the two (2) inner wires.
8. If connecting the Underwater Light to a junction box, connect the black wire of the light to power and the white wire to common. There is no ground wire coming from the light. See Table 2 to determine which voltage taps to use at the low voltage transformer connection.
 - a. If connecting the Underwater Light to a Transformer/Junction Box unit, consult the instructions included with the Transformer/Junction Box unit to determine the correct wire connections.

Table 2. Determining Transformer Tap Voltage

Cord Gage	*Total Cord Length (ft.)	12 Volt Tap	13 Volt Tap	14 Volt Tap
18	15 - 20		X	
18	25 - 30			X
16	15	X		
16	20 - 30		X	
16	35 - 50			X
12	15 - 30	X		
12	35 - 65		X	
12	70 - 75			X


* Note: total cord length is length of cord from the light to the junction box plus the length of cord from the junction box to the transformer.

- b. The cord gauge is indicated on the cord jackets.

	 WARNING
	<p>Never operate this Underwater Light for more than 10 seconds unless it is totally submerged in water. Without total submersion, the light assembly will get extremely hot, which may result in serious burns or in damage of the lamp or lens. This may result in serious injury to pool users, installers, or bystanders or in damage to property.</p>


9. Install the Underwater Light by rotating the light in a clockwise direction towards the niche, when viewed from front. Wrap the cord in a single layer around the light. Start wrapping the cord at the rear of the housing and work towards the face ring, see Figure 2.
10. When the Underwater Light is level with the niche secure the cord in the cord lock on the base of the light, see Figure 2.
11. Install the Underwater Light into the niche and tighten the special stainless steel pilot screw.
12. Fill pool until the Underwater Light is completely submerged in water before operating the light for more than 10 seconds. To check for proper operation turn on main switch or circuit breaker, as well as the switch which operates the Underwater Light itself.

III. Replacing a lamp only.

	⚠ DANGER
	RISK OF ELECTRICAL SHOCK OR ELECTROCUTION Always disconnect power to the pool light at the circuit breaker before servicing the light. Failure to do so could result in death or serious injury to installer, serviceman, pool users, or others due to electrical shock.

1. Turn off main electrical switch or circuit breaker, as well as the switch which operates the Underwater Light itself.
2. Materials required for installation procedure:
 - a. New O-ring seal (part number 79207100).
 - b. New 12 volt, 75 watt, MR16 lamp (part number 79112400).

	⚠ WARNING
	Replace lamp with a similar type and wattage. Failure to replace lamp with the same type of lamp will damage the light assembly and may cause an electrical hazard resulting in death or serious injury to pool users, installers, or others due to electrical shock, and may also cause damage to property.

	⚠ WARNING
	Always install a new O-ring seal (part number 79207100) whenever disassembling the light. Failure to do so may permit water to leak into the assembly which could cause an electrical hazard resulting in death or serious injury to pool users, installer, or others due to electrical shock, and may also cause property damage.

3. To remove light assembly, remove pilot screw at top of face ring, remove light assembly from niche, and place assembly on deck.
4. Unscrew the base of the light by rotating counterclockwise one quarter turn.
5. Remove and discard the old O-ring seal and lamp.
6. Install a new O-ring seal onto the base of the light. Make sure the O-ring seal is fully seated in the groove with no twists.
7. Install a new 12 volt, 75 watt, MR-16 lamp into the base of the light.
 - a. Be sure that the lamp is fully inserted into the base.
 - b. Be careful not to touch the bulb of the lamp with bare skin, as this will reduce the life of the bulb.

	⚠ WARNING
	Never operate this Underwater Light for more than 10 seconds unless it is totally submerged in water. Without total submersion, the light assembly will get extremely hot, which may result in serious burns or in breakage of the lamp or lens. This may result in serious injury to pool users, installers, or bystanders, or in damage to property.

8. Screw the base of the light into the light housing in a clockwise direction until the closed arrow on the base lines up with the mark on the housing. The light base will snap into place when it reaches the closed position, see Figure 4.
9. Install the Underwater Light by rotating the light in a clockwise direction towards the niche, when viewed from front. Wrap the cord in a single layer around the light. Start wrapping the cord at the rear of the housing and work towards the face ring, see Figure 4.
10. When the Underwater Light is level with the niche secure the cord in the cord lock on the base of the light, see Figure 4.
11. Install the Underwater Light into the niche and tighten the special stainless steel pilot screw.
12. Fill pool until the Underwater Light is completely submerged in water before operating the light for more than 10 seconds. To check for proper operation turn on main switch or circuit breaker, as well as the switch which operates the Underwater Light itself.

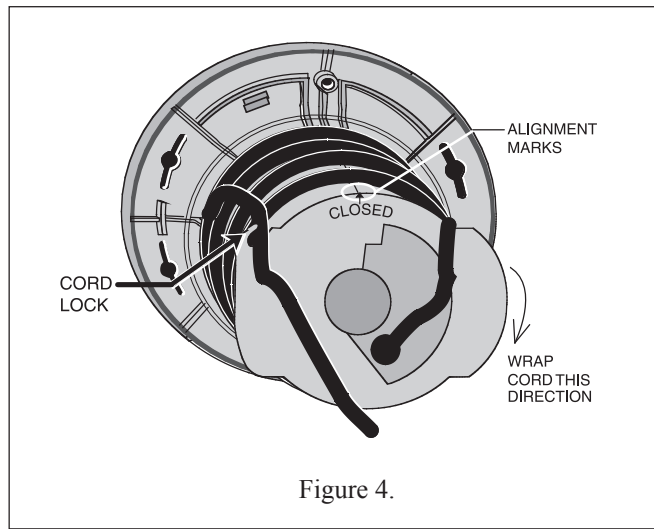
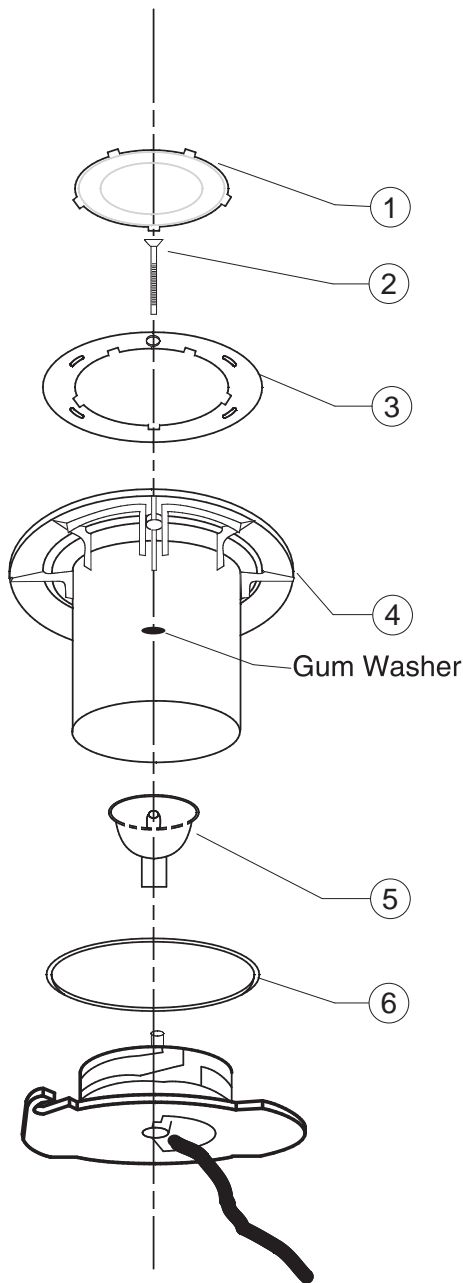


Figure 4.

ITEM NO.	DESCRIPTION	PART NO.
1	Colored Lens, Blue	79105401
	Colored Lens, Red	79105402
2	Pilot Screw with Gum Washer	79104800
3	Decorative Face Ring, White	79210000
	Decorative Face Ring, Grey	79210065
	Decorative Face Ring, Black	79210011
4	Housing Assy. with Instructions	79207000
5	75 Watt, 12 Volt, MR-16 Lamp	79112400
6	O-Ring with Instructions	79207100

SAVE THESE INSTRUCTIONS



1620 HAWKINS AVE., SANFORD, NC 27330 • (919) 566-8000
 10951 WEST LOS ANGELES AVE., MOORPARK, CA 93021 • (805) 553-5000

WWW.PENTAIRPOOL.COM

All Pentair trademarks and logos are owned by Pentair, Inc. Pentair Aquatic Systems™, HiLite® are trademarks and/or registered trademarks of Pentair Water Pool and Spa, Inc. and/or its affiliated companies in the United States and/or other countries. Unless expressly noted, names and brands of third parties that may be used in this document are not used to indicate an affiliation or endorsement between the owners of these names and brands and Pentair Water Pool and Spa, Inc. Those names and brands may be the trademarks or registered trademarks of those third parties. Because we are continuously improving our products and services, Pentair reserves the right to change specifications without prior notice. Pentair is an equal opportunity employer.

© 2013 Pentair Aquatic Systems. All rights reserved.
 This document is subject to change without notice.

P/N 99791500 REV. D 4/24/13